



A compact vacuum switch utilising a high quality snap action micro switch for applications in which price and size are of concern. It is used for pneumatic, water and low pressure applications. Its modular design allows for a variety of electrical and mechanical terminations.



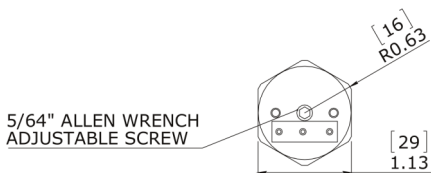
FL - Flying Leads

HC -DIN Plug

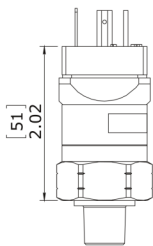
SP - Spade Terminal

Pressure Range		
PVDMA	5-30" inHg	170-1016 Millibar

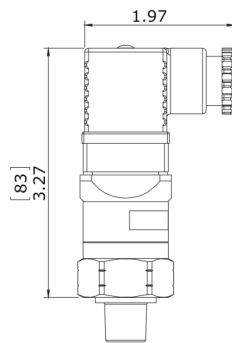
Electrical	5A (12/24 VDC) - (125/250 VAC)
Protection	DIN 43650A IP65 - HC, Spade Terminal IP00 - SP, Flying Leads IP65 - FL
Mechanical Life	1,000,000 at 20 inHg
Diaphragm Material	Nitrile (standard), Viton and EPDM options.
Housing Material	Brass (standard), Stainless Steel options.
Max. Overpressure	25 bar
Repeatability	+/- 2% full set point @20° C
Differential	10-40%
Weight	0.12kg



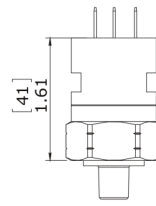
5/64" ALLEN WRENCH
ADJUSTABLE SCREW



H
DIN Male Only



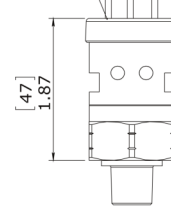
HC
DIN 43650A



SP
1/4" Spades



Optional IP67
Protective Cap
CA (Adjustable)
CS (Factory Set)



FL
Flying Leads

PVDMA	-	XX	-	X	-	XX	-	X	-	X
	CONNECTION		SWITCH		EC CONNECTION		BODY		DIAPHRAGM	
	G1/8" Male	2G	Normally Open	A	DIN Plug	HC	Brass	2	Viton	1
	1/8" NPT Male	2M	Normally Closed	B	Flying Leads	FL	St.St.	3	EPDM	2
	G1/4" Male	4G	Change Over	C	Spade Terminal	SP			Nitrile	4